

Gas Fired Immersion Heater Sheath System

INTRODUCTION

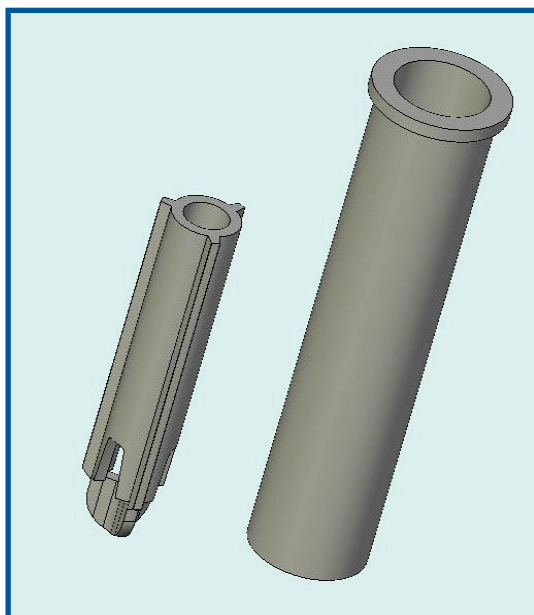
Morgan Molten Metal Systems has, using advanced bonding technology, developed a heater sheath and gas diverter system for use in Zinc melting and holding processes. The Morgan Molten Metal Systems heater sheath and gas diverter are manufactured using a high pressure isostatic press to form the carbon bonded silicon carbide material into a consistent high quality product. These are then further treated to give a very high resistance to oxidation and extended service life. The properties obtained provide Zinc melters and galvanizers, using gas fired immersion heater furnaces, with a cost effective consumable which reduces maintenance and downtime.

FEATURES

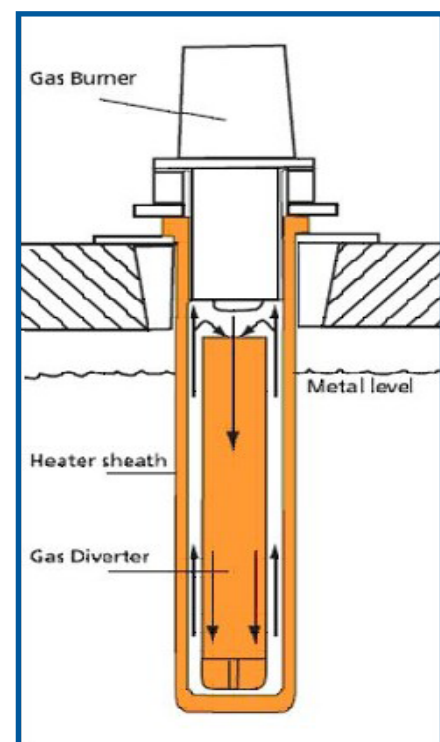
- Sheath and diverter in wear resistant silicon carbide for long life.
- High pressure isostatic press manufacture.
- Treated for additional anti-oxidation properties

ADVANTAGES

- Superior erosion resistance.
- High resistance to chemical erosion.
- Excellent thermal shock resistance.
- High mechanical strength.
- High consistent density.
- Sheath and diverter from single source supplier.
- Long life for reduced cost.



Heater Sheath and Diverter



Gas Fired Application

Heater Sheath M8586BG			
Length	Outside Diameter	Inside Diameter	Flange Diameter
960 mm	205 mm	165 mm	240 mm

Gas diverter GD120660B			
Length	Tube outside Diameter	Tube Inside Diameter	Diameter
660 mm	120 mm	80 mm	160 mm