

# PRO Coating

-lower dross adhesion & lower impurities in molten metal

## Prime Features

- High non-wettability leading to low dross adhesion
- Low impurity leak into molten metal
- Thin, low porosity, high density coat due to micro-scaled ingredients

## Applications

- High purity aluminium metal (99.999%)
- Aluminium alloys
- Zinc distillation
- Precious metal melting

## Usage Instructions

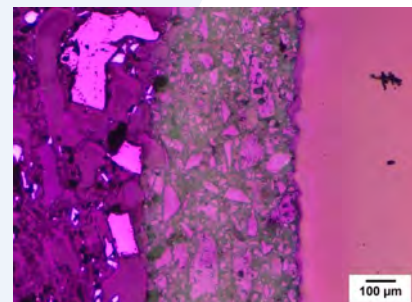
- All types of crucibles
- All types of furnaces
- Installation and pre-heating procedures of coated crucibles remain unchanged

## Physical & Technical Properties

- Colour: White
- Max. application temperature: 1600°



*Fig. 1: PRO coated crucible*



*Fig. 2: PRO Coating under the microscope*

## Quality

PRO Coating coated crucibles are manufactured from premium grade raw materials under an ISO 9001:2008 quality management system.

For more information, contact us today.

Please note that all values quoted are based on laboratory tests and may not reflect actual results. These values are not guaranteed in anyway whatsoever and should be treated as indicative and for guidance only. Please consult your local provider for a personalized recommendation according to customer application 11/2016.